



MCRAND II

LT008

DESCRIPTION:
Two-tone stripes dominate this bohemian hand loomed throw, imbuing it with a casual folkloric quality that contrasts with the luxurious hand-feel produced by six-ply cashmere yarns.

DIMENSIONS:
54"W x 78"L

MATERIALS:
100% 6-ply cashmere



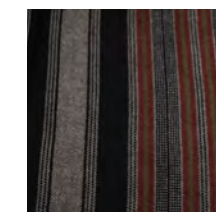
COLORS:



white / charcoal /
beige melange



crema



umbria-black



Additional colors available. 5 piece order minimum.

NOTES:
Pricing is quoted F.O.B. from San Luis Obispo, CA
Please contact us for current pricing, leadtimes, or other inquiries.
Call +1.805.784.0967 or e-mail: info@iansaude.com

rev. 01/23