



MONGOL

LT003

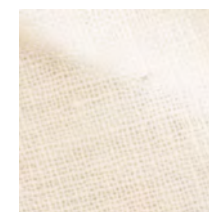
DESCRIPTION:
The natural rustic look of this beautiful throw is achieved by using hand-spun cashmere yarns and a four-sided self fringe. It is both warm and lightweight.

DIMENSIONS:
50"W x 80"L

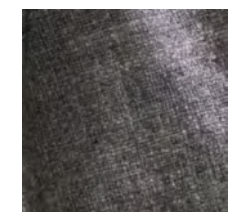
MATERIALS:
100% hand-spun cashmere



COLORS:



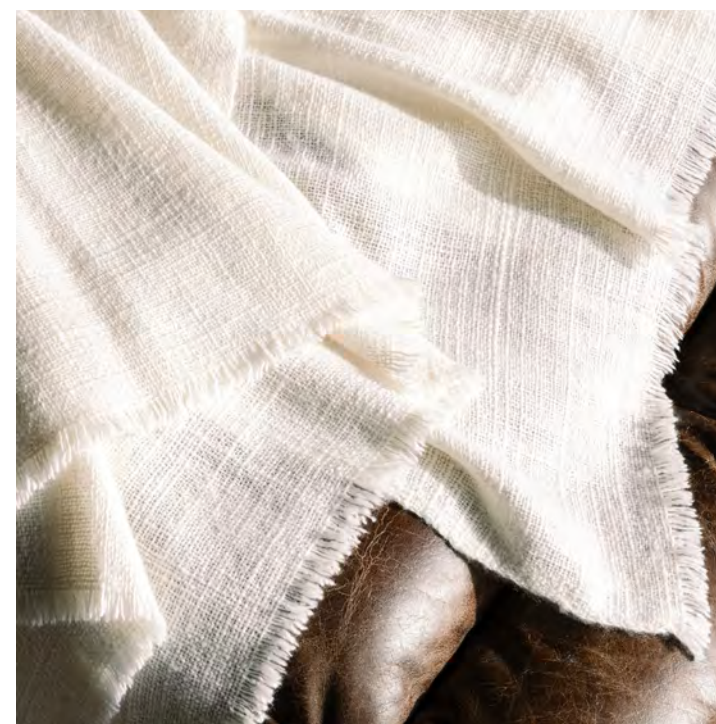
natural white



charcoal



dark coffee



light gray

Additional colors available. 5 piece order minimum.

NOTES:
Pricing is quoted F.O.B. from San Luis Obispo, CA
Please contact us for current pricing, leadtimes, or other inquiries.
Call +1.805.784.0967 or e-mail: info@iansaude.com

rev. 01/23