



## TERRA LH7102

**DESCRIPTION:**  
This natural cashmere throw is woven by hand in heavyweight two-by-two ply hand-spun cashmere to create a pluse crêpe texture.

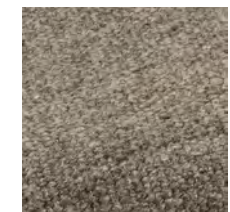
**DIMENSIONS:**  
50"W x 80"L

**MATERIALS:**  
100% hand-spun cashmere

**COLORS:**



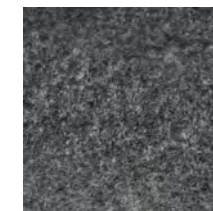
light coffee melagne



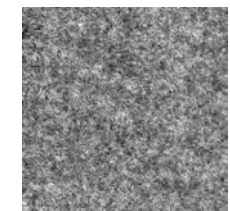
dark coffee melange



natural black melange



dark grey melagne



light grey melange

Additional colors available. 5 piece order minimum.

**NOTES:**  
Pricing is quoted F.O.B. from San Luis Obispo, CA  
Please contact us for current pricing, lead times, or other inquiries.  
Call +1.805.784.0967 or e-mail: [info@iansaude.com](mailto:info@iansaude.com)

rev. 01/23

